

# 389 Long-tailed Tit



Long-tailed Tit. Adult (15-V).



Long-tailed Tit. Juvenile (15-V).

**LONG-TAILED TIT** (*Aegithalos caedatus*)

**IDENTIFICATION**

13-15 (of which tail 7-9). Small species with long black and white tail; black and vinous upperparts; light underparts with reddish belly.

**SIMILAR SPECIES**

This species is unmistakable.

**SEXING**

Plumages of both sexes alike.

**AGEING**

2 types of age can be recognized:

**Juvenile** with brown upperparts; the central pair of tail feathers shorter than the rest.

**Adult** with black and pink upperparts; all the tail feathers with the same length.

After the **postbreeding/postjuvenile** moult, ageing is not possible using plumage characters.

**MOULT**

Complete **postbreeding** and **postjuvenile** moult, usually finished in early October.

**PHENOLOGY**

I	II	III	IV	V	VI	VII	VIII	IX	X	XI	XII

**STATUS IN ARAGÓN**

Resident, with contribution of wintering European birds in cold winters. Widely distributed throughout the Region in forested areas.



Long-tailed Tit. Head pattern: top adult (15-V); bottom juvenile (15-V).

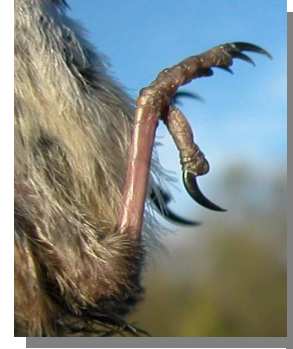
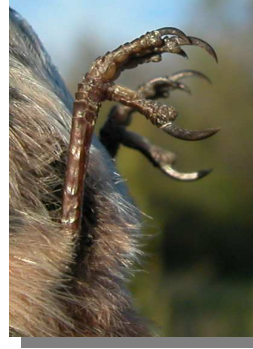


Long-tailed Tit. Breast pattern: left adult (15-V); right juvenile (15-V).

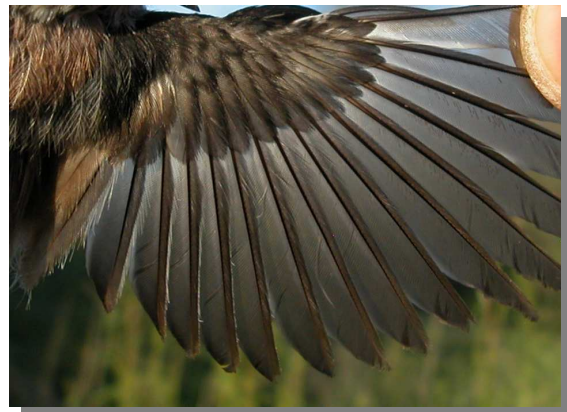
# 389 Long-tailed Tit



Long-tailed Tit. Upperpart pattern: left adult (15-V); right juvenile (15-V).



Long-tailed Tit. Legs colour: left adult (15-V); right juvenile (15-V).



Long-tailed Tit. Adult: pattern of wing (15-V).



Long-tailed Tit. Length of central tail feathers: left adult (15-V); right juvenile (15-V).



Long-tailed Tit. Juvenile: pattern of wing (15-V)