

# 312 Tree Pipit



Tree Pipit. Autumn. Adult (20-IX).

## TREE PIPIT (*Anthus trivialis*)

### IDENTIFICATION

14-15 cm. Upperpart pale olive brown, with dark streaked; whitish breast; breast and flanks straked; pinkish base of bill; outermost tail feathers with white patch; pale legs with short hindclaw.

### SIMILAR SPECIES

**Water Pipit** has dark legs; among **Pipits** with pale legs, **Tawny Pipit** has sandy plumage and lacks streaks on flanks; **Meadow Pipit** has a very long hindclaw, yellow base of bill and streaks on flanks similar to the breast ones.



Water Pipit



Meadow Pipit



Tawny Pipit

### SEXING

Plumage of both sexes alike. Size can be helpful in extreme birds: **male** with wing longer than 89 mm; **female** with wing shorter than 84 mm.

### AGEING

3 types of age can be recognized:

**Juvenile** with fresh plumage.

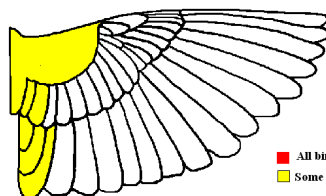
**1st year autumn** with moult limit between moulted greenish lesser coverts and retained juveniles with white tips; if all lesser coverts have been moulted, limit is between median coverts or between greater coverts and tertials.

**Adults** with all feathers of the same generation. **CAUTION:** inner greater coverts in **adults** have a different pattern than neighbors and seem a moult limit.

**CAUTION:** after **prebreeding** moult ageing is very difficult since both types of age have several generations of feathers.

### MOULT

Complete **postbreeding** moult, usually finished in September. Partial **postjuvenile** moult including body feathers and most of the lesser coverts; some birds moult some or all median coverts and sometimes greater coverts and tertials; finished in September. Both types of age have a **prebreeding** moult changing tertials and several wing coverts (but never primary coverts).



Tree Pipit. Extent of postjuvenile moult.

■ All birds  
■ Some birds

### PHENOLOGY

I	II	III	IV	V	VI	VII	VIII	IX	X	XI	XII

### STATUS IN ARAGON

Summer visitor. Breeds in mountainous forests from Pyrenees and Sistema Iberico.

# 312 Tree Pipit



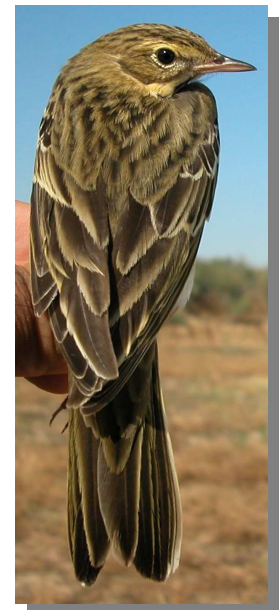
Tree Pipit. Pattern of flank and legs.



Tree Pipit. Autumn. Breast pattern: left adult (20-IX); right 1st year (20-IX).



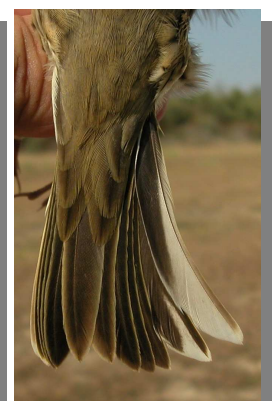
Tawny Pipit. Spring. Adult: pattern of wing Tree



Tree Pipit. Autumn. Upperparts pattern: left adult (20-IX); right 1st year (20-IX).

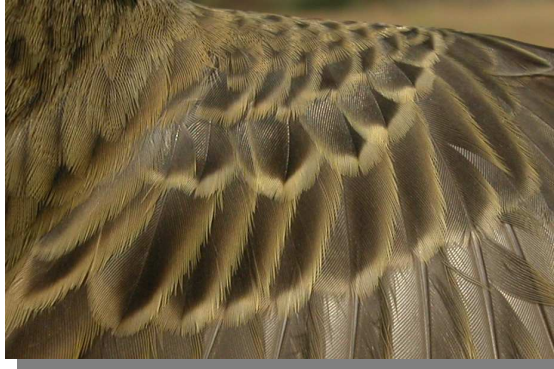


Tree Pipit. Autumn. Head pattern: top adult (20-IX); bottom 1st year (20-IX).



Tree Pipit. Autumn. Tail pattern: left adult (20-IX); right 1st year (20-IX).

## 312 Tree Pipit



Tree Pipit. Autumn. Adult: pattern of wing coverts (20-IX).



Tree Pipit. Autumn. 1st year: pattern of wing coverts (20-IX).



Tree Pipit. Autumn. Adult: pattern of wing (20-IX).



Tree Pipit. Autumn. 1st year: pattern of wing (20-IX).